

ST. MADDERN'S C OF E SCHOOL

WEEKLY NEWSLETTER

Friday 8th May 2015

Headteacher: Miss H Pearce

Email: secretary@st-madderns.cornwall.sch.uk

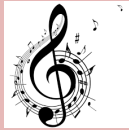
Website: <http://www.st-madderns.cornwall.sch.uk/website>

Telephone: (01736) 364845



SCHOOL EVENTS

On Wednesday **13 May** KS2 children will be taking part in the Wall Music Festival. We will be performing at **1:15pm**. Any parents who would like to come and support the children would be most welcome.



On Thursday we ran a very successful Key Stage 1 trip to Hayle Rescue Centre for animals. The children are learning all about pets and animals and how we can look after them. Thank you to the Centre who gave each child a goodie bag to take home.

ADVANCE NOTICES

On Friday **15 May** in the afternoon the children will be able to produce a 'garden on a plate' that can be entered for a competition at the Spring Fayre if they wish. They may bring in items from home to make their garden: moss, silver foil, etc. The garden plates will be taken over on Friday afternoon, ready for the following day.



On Saturday **16 May** there will be a Spring Fayre held at Landithy Hall at **10.30am – 1.30pm**.

As the weather is getting warmer there are a number of children who are riding or scooting to school which is great. A gentle reminder that children need to ensure that they get off their scooters or bikes as they enter the school grounds and they should be **wearing a helmet** if they choose to bike or scoot. I have a friend, who is now in a wheelchair as a result of not wearing a bike helmet which makes me all the more worried when I see children putting themselves at risk for the sake of an inexpensive piece of equipment.



SUMMER CAMP 13—15 July



This year our annual residential trip to the Roseland Centre near St Mawes will take place on the **13th, 14th, and 15th July**. We will be sleeping in dormitories this year (as opposed to tents). The cost of the trip, which includes use of all equipment, qualified instructors, accommodation, food and transport **£135.00**

Please fill in the form below if you are interested in your child attending. Children in years 4, 5 and 6 are eligible to take part.

Residential Trip Form

Name.....

My child/ren would like to take part in the school residential trip to the Roseland Centre this year.

Signed.....



Headteacher's Award:

Grace Whitton for being so polite and helpful on the recent school trips

Reading Karate:

Yellow: Josh Curry

Orange: Harry Figg



Star Readers:

Josh Curry, Harry Figg, Kayden Salmon-Curtin, Tierhi Prowse, Alexa Moffatt-Banks,
Grace Whitton

Super Spellers:

Kelci Prowse, Tiffany Salmon-Curtin, Harry Figg



Meal Time Award:

Tilly Hume for settling in so nicely to the lunch time routine and showing such lovely
manners

Pre-school:

Kenza Tonkin for progressing so well with her number work.

DATES FOR YOUR DIARY

11th May SAT week reading

12th May SPAG PET meeting 6pm

13th May Mental Maths, Wall Music Festival, Finance committee 3.30, planning assessing 3.30-5.30

14th May Maths paper 2

16th May Landithy Spring Fayre 10.30-1.30

18th May Health and well being week Kitchen opening 2PM

19th May Bikeability smoothie bike

20th Bikeability curriculum govs meeting 3.30

22nd May INSET DAY

Interested in taking part in Hockey? Haven't played since school? Mixed Back to Hockey sessions are starting in Penzance on Tuesday 12th May from 7-8pm.

Details are available from the office.